

2020  
PRODUCT  
CATALOG

*Winfield®*  
*Simple Elegance*





## L2017 / L1916

- Oval 20" X 17" / 19" x 16"
- Self Rimming Drop-In
- Concealed Overflow
- 3 Faucet Holes
- 4" Punching / 8" Punching are available
- Available in White/Biscuit/Bone

\* Faucet Not Included



## L1919

- Round 19"
- Self Rimming Drop-In
- Concealed Overflow
- 3 Faucet Holes
- 4" Punching / 8" Punching are available
- Available in White

\* Faucet Not Included



## L181525

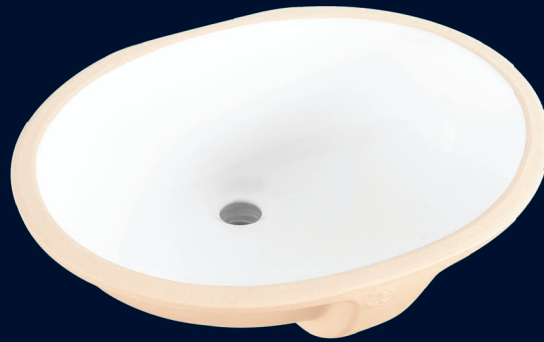
- Victorian 18" X 15"
- Self Rimming Drop-In
- Concealed Overflow
- Available in White



## L1645

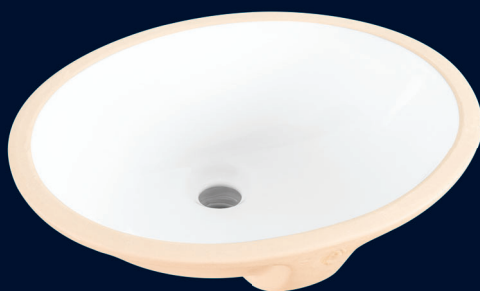
- Rectangular 21" x 18"
- Self Rimming Drop-In
- Overflow
- 1 Faucet Hole
- Center Punching / 4" Punching are available
- Available in White

\* Faucet Not Included



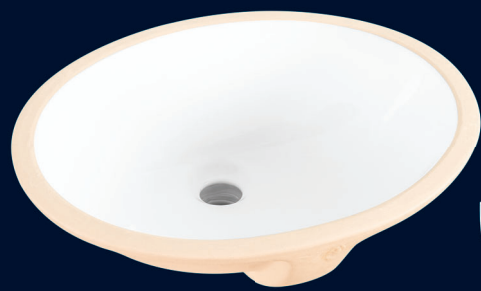
### LU1916

- Oval 19" x 16"
- Vitreous China
- High Gloss Ceramic Finish
- Available in White/Biscuit/Bone



### LU1815

- Oval 18" x 15"
- Vitreous China
- High Gloss Ceramic Finish
- Available in White



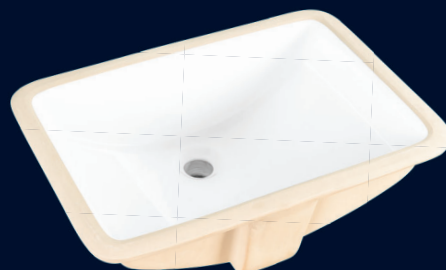
### LU1714

- Oval 17" x 14"
- Vitreous China
- High Gloss Ceramic Finish
- Available in White/Biscuit/Bone



## LU2015

- Rectangular 20" x 15"
- Vitreous China
- High Gloss Ceramic Finish
- Available in White/Biscuit/Bone



## LU2014KS

- Rectangular 20" x 14"
- Vitreous China
- High Gloss Ceramic Finish
- Available in White



## LU1915

- Rectangular 19" x 15"
- Vitreous China
- High Gloss Ceramic Finish
- Available in White



## LU181350

- Rectangular 18" x 13"
- Vitreous China
- High Gloss Ceramic Finish
- Available in White



### K52

- Rectangular 22" x 15"
- 1 Faucet Hole
- Vitreous China
- High Gloss Ceramic Finish
- Available in White

\* Faucet Not Included



### K07-2113

- Capsule-shaped 22" x 13"
- Vitreous China
- High Gloss Ceramic Finish
- Available in White



### K11-2018

- Rectangular 20" x 19"
- 1 Faucet Hole
- Vitreous China
- High Gloss Ceramic Finish
- Available in White

\* Faucet Not Included



### K02-2017

- Rectangular 20" x 17"
- 1 Faucet Hole
- Vitreous China
- High Gloss Ceramic Finish
- Available in White

\* Faucet Not Included





### K40-R1919

- Round 19"
- 1 Faucet Hole
- Vitreous China
- High Gloss Ceramic Finish
- Available in White

\* Faucet Not Included



### K56

- Rectangular 19" x 16"
- 1 Faucet Hole
- Vitreous China
- High Gloss Ceramic Finish
- Available in White

\* Faucet Not Included



### K03-S1818

- Square 18"
- 1 Faucet Hole
- Vitreous China
- High Gloss Ceramic Finish
- Available in White

\* Faucet Not Included



### V416-R1534

- Round 16"
- Vitreous China
- High Gloss Ceramic Finish
- Available in White



## LP2520

- Oval 25" x 20"
- 3 Faucet Holes
- 4" Punching
- Vitreous China
- High Gloss Ceramic Finish
- Available in White

\* Faucet Not Included



## LP2218

- Oval 22" x 18"
- 3 Faucet Holes
- 4" Punching / 8" Punching are available
- Vitreous China
- High Gloss Ceramic Finish
- Available in White

\* Faucet Not Included



## LP1917

- Oval 19" x 17"
- 3 Faucet Holes
- 4" Punching
- Vitreous China
- High Gloss Ceramic Finish
- Available in White

\* Faucet Not Included



### LP1618

- Victorian 30" x 22"
- 3 Faucet Holes
- 8" Punching
- Vitreous China
- High Gloss Ceramic Finish
- Available in White

\* Faucet Not Included



### LP1718

- Victorian 24" x 19"
- 3 Faucet Holes
- 8" Punching
- Vitreous China
- High Gloss Ceramic Finish
- Available in White

\* Faucet Not Included



### LP1315

- Victorian 30" x 22"
- 3 Faucet Holes
- 8" Punching
- Vitreous China
- High Gloss Ceramic Finish
- Available in White

\* Faucet Not Included



### LP1415

- Victorian 24" x 19"
- 3 Faucet Holes
- 8" Punching
- Vitreous China
- High Gloss Ceramic Finish
- Available in White

\* Faucet Not Included



# WALL HANG & URINAL

## LAVATORY



### LWH2018

- Rectangular 20" x 18"
- Concealed Overflow
- 3 Faucet Holes, 4" Punching
- Wall Bracket Included
- Drilled Concealed Carrier Arms
- Vitreous China
- High Gloss Ceramic Finish
- Available in White

\* Faucet Not Included



### LWH1917

- Rectangular 19" x 17"
- Concealed Overflow
- 3 Faucet Holes, 4" Punching
- Wall Bracket Included
- Drilled Concealed Carrier Arms
- Vitreous China
- High Gloss Ceramic Finish
- Available in White

\* Faucet Not Included



### U240

- Dimensions: 13" x 13" x 22"
- Washout Flushing Action
- 0.5-1.0 GPF
- 3/4" Top Spud
- 2" I.P.S. Outlet Flange and Rubber Gasket with Integral Trap
- High Gloss Ceramic Finish

\* Flush Valve Not Included



### U241

- Dimensions: 18-3/4" x 14" x 26"
- Washout Flushing Action
- 0.5-1.0 GPF
- 3/4" Top Spud
- 2" I.P.S. Outlet Flange and Rubber Gasket with Integral Trap
- 14" Extended Rim for Handicap Compliance When Installed at Proper Height
- High Gloss Ceramic Finish

\* Flush Valve Not Included

LAVATORY

URINAL

TOILET

TOILET SEAT

## 1.0 Gallon



## T32420

TB32420 Bowl + TK32420 Tank

- Round Front Two-Piece
- 1.0 GPF Single Flush
- Left/Right-Hand Trip Lever
- 12" Rough-In
- 3" Flush Valve
- MaP Flush Score  $\geq 1,000$  grams

\* Toilet Seat and Wax Ring Not Included



## T32425

TB32425 Bowl  
+ TK32420 Tank

- Elongated Two-Piece
- 1.0 GPF Single Flush
- Left/Right-Hand Trip Lever
- 12" Rough-In
- 3" Flush Valve
- MaP Flush Score  $\geq 1,000$  grams

\* Toilet Seat and Wax Ring Not Included



## T32425H

TB32425H Bowl  
+ TK32420 Tank

- ADA Elongated Two-Piece
- 1.0 GPF Single Flush
- Left/Right-Hand Trip Lever
- 12" Rough-In
- 3" Flush Valve
- MaP Flush Score  $\geq 1,000$  grams

\* Toilet Seat and Wax Ring Not Included

## 1.28 Gallon



## T3511

TB3511 Bowl + TK3512 Tank

- ADA Elongated Two-Piece
- 1.28 GPF Single Flush
- Left/Right-Hand Trip Lever
- 12"/10" Rough-In
- 3" Flush Valve
- MaP Flush Score  $\geq$  1,000 grams

\* Toilet Seat and Wax Ring Not Included



## T3512

TB3512 Bowl  
+ TK3512 Tank

- Elongated Two-Piece
- 1.28 GPF Single Flush
- Left/Right-Hand Trip Lever
- 12"/10" Rough-In
- 3" Flush Valve
- MaP Flush Score  $\geq$  1,000 grams

\* Toilet Seat and Wax Ring Not Included



## T3513

TB3513 Bowl  
+ TK3512 Tank

- Round Front Two-Piece
- 1.28 GPF Single Flush
- Left/Right-Hand Trip Lever
- 12"/10" Rough-In
- 3" Flush Valve
- MaP Flush Score  $\geq$  1,000 grams

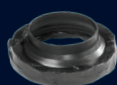
\* Toilet Seat and Wax Ring Not Included

## 1.28 Gallon All-in-One



## T3511A

- ADA Elongated
- Two-Piece All-in-One
- 1.28 GPF Single Flush
- Left/Right-Hand Trip Lever
- 12"/10" Rough-In
- 3" Flush Valve
- MaP Flush Score  $\geq 1,000$  grams
- Slow Close Toilet Seat Included
- Wax Ring & Flange Bolts Included



Wax Ring



Flange Bolts



## T3512A



- Elongated
- Two-Piece All-in-One
- 1.28 GPF Single Flush
- Left/Right-Hand Trip Lever
- 12"/10" Rough-In
- 3" Flush Valve
- MaP Flush Score  $\geq 1,000$  grams
- Slow Close Toilet Seat Included
- Wax Ring & Flange Bolts Included



## T3513A



- Round Front
- Two-Piece All-in-One
- 1.28 GPF Single Flush
- Left/Right-Hand Trip Lever
- 12"/10" Rough-In
- 3" Flush Valve
- MaP Flush Score  $\geq 1,000$  grams
- Slow Close Toilet Seat Included
- Wax Ring & Flange Bolts Included

## Dual Flush

**A549**TB32549 Bowl  
+ TK32549D Tank

- Skirting Elongated Two-Piece
- 1.0/1.6 GPF Dual Flush
- Top Push Button
- 12" Rough-In
- 3" Flush Valve
- 1.28/1.6 Left-Hand Trip Lever Side Dual Flush Optional
- Slow Close Toilet Seat Included
- Wax Ring & Flange Bolts Included

**A3578**TB3511 Bowl  
+ TK3578D Tank

- ADA Height Elongated Two-Piece
- 1.0/1.28 GPF Dual Flush
- Top Push Button
- 12" Rough-In
- 3" Flush Valve

\* Toilet Seat and Wax Ring Not Included

**T3511D**

TB3511 Bowl + TK3512D Tank



- ADA Elongated Two-Piece
- 1.0/1.6 GPF Dual Flush
- Left/Right-Hand Trip Lever
- 12"/10" Rough-In
- 3" Flush Valve
- MaP Flush Score  $\geq 1,000$  grams

\* Toilet Seat and Wax Ring Not Included

**T3512D**TB3512 Bowl  
+ TK3512D Tank

- Elongated Two-Piece
- 1.0/1.6 GPF Dual Flush
- Left/Right-Hand Trip Lever
- 12"/10" Rough-In
- 3" Flush Valve
- MaP Flush Score  $\geq 1,000$  grams

\* Toilet Seat and Wax Ring Not Included

**T3513D**TB3513 Bowl  
+ TK3512D Tank

- Round Front Two-Piece
- 1.0/1.6 GPF Dual Flush
- Left/Right-Hand Trip Lever
- 12"/10" Rough-In
- 3" Flush Valve
- MaP Flush Score  $\geq 1,000$  grams

\* Toilet Seat and Wax Ring Not Included

## 1.6 Gallon



## TC6811

T6811 Bowl + X6811 Tank

- Elongated
- Two-Piece
- 1.6 GPF Single Flush
- Left/Right-Hand Trip Lever
- 12" Rough-In
- 3" Flush Valve

\* Toilet Seat and Wax Ring Not Included



## TC6816

T6816 Bowl  
+ X6811 Tank

- Round Front Two-Piece
- 1.6 GPF Single Flush
- Left/Right-Hand Trip Lever
- 12" Rough-In
- 3" Flush Valve

\* Toilet Seat and Wax Ring Not Included



## TC6811H

T6811H Bowl  
+ X6811 Tank

- ADA Elongated Two-Piece
- 1.6 GPF Single Flush
- Left/Right-Hand Trip Lever
- 12" Rough-In
- 3" Flush Valve

\* Toilet Seat and Wax Ring Not Included



# Flushometer-Valve



## T155 / T165

- Elongated / ADA Elongated
- Floor Mount Flushometer Valve Toilet
- High Efficiency, Low Consumption
- 1.1 GPF to 1.6 GPF
- Fully Glazed 2-1/8" Trap Way
- 1-1/2" Brass Inlet and Waxed Ring Included

\* Flush Valve Not Included

# 1.6 Gallon



## T6812

- Round Front
- One-Piece
- 1.6 GPF Single Flush
- Top Push Button / Left-Hand Trip Lever
- 12" Rough-In
- Slow Close Toilet Seat Included
- Wax Ring & Flange Bolts Included

LAVATORY

URINAL

TOILET

TOILET SEAT

## 1.28 Gallon



K0324



- Skirting Elongated One-Piece
- 1.28 GPF Single Flush
- Top Push Button
- 12" Rough-In
- Slow Close Toilet Seat Included
- Wax Ring & Flange Bolts Included



T31009



- Skirting Elongated One-Piece
- 1.28 GPF Single Flush
- Left-Hand Trip Lever
- 12" Rough-In
- Slow Close Toilet Seat Included
- Wax Ring & Flange Bolts Included



K0328



- Skirting Elongated One-Piece
- 1.28 GPF Single Flush
- Top Push Button
- 12" Rough-In
- 3" Flush Valve
- Slow Close Toilet Seat Included
- Wax Ring & Flange Bolts Included



K0328S



- Skirting Elongated One-Piece
- 1.28 GPF Single Flush
- Left-Hand Trip Lever
- 12" Rough-In
- 3" Flush Valve
- Slow Close Toilet Seat Included
- Wax Ring & Flange Bolts Included
- Available in ADA (Item # T32184)

# ONE-PIECE

# TOILET

## 1.28 Gallon



T22183



- Skirting Elongated One-Piece
- 1.28 GPF Single Flush
- Left-Hand Trip Lever
- 12" Rough-In
- Slow Close Toilet Seat Included
- Wax Ring & Flange Bolts Included
- MFR# OVS-2183



T21729



- Elongated One-Piece
- 1.28 GPF Single Flush
- Left-Hand Trip Lever
- 12" Rough-In
- Slow Close Toilet Seat Included
- Wax Ring & Flange Bolts Included



T32182



- Elongated One-Piece
- 1.28 GPF Single Flush
- Left-Hand Trip Lever
- 12" Rough-In
- 3" Flush Valve
- Slow Close Toilet Seat Included
- Wax Ring & Flange Bolts Included
- MFR# OVS-2182



T22181



- Skirting Elongated One-Piece
- 1.28 GPF Single Flush
- Left-Hand Trip Lever
- 12" Rough-In
- Slow Close Toilet Seat Included
- Wax Ring & Flange Bolts Included
- MFR# OVS-2181

LAVATORY

URINAL

TOILET

TOILET SEAT

## Dual Flush



T31182D



- Elongated One-Piece
- 1.0/1.28 GPF Dual Flush
- Left-Hand Trip Lever
- 12" Rough-In
- 3" Flush Valve
- Slow Close Toilet Seat Included
- Wax Ring & Flange Bolts Included



T21058D



- Skirted Elongated One-Piece
- 1.0/1.6 GPF Dual Flush
- Top Push Button
- 12" Rough-In
- MaP Flush Score  $\geq 1,000$  grams
- Slow Close Toilet Seat Included
- Wax Ring & Flange Bolts Included



T2135D



- Elongated One-Piece
- 1.0/1.6 GPF Dual Flush
- Top Push Button
- 12" Rough-In
- Slow Close Toilet Seat Included
- Wax Ring & Flange Bolts Included



T21729D



- Elongated One-Piece
- 1.0/1.6 GPF Dual Flush
- Top Push Button
- 1.28 Left-Hand Trip Lever Single Flush Optional
- 12" Rough-In
- Slow Close Toilet Seat Included
- Wax Ring & Flange Bolts Included

# TOILET SEAT



TSE395SL  
TSE395

- Elongated Plastic Toilet Seat
- Slow Close/Quick Close
- High-Grade Strong Plastic Build
- Fast and Secure Hassle-Free Installation
- Ergonomic Design



TSR379SL  
TSR379

- Round Front Plastic Toilet Seat
- Slow Close/Quick Close
- High-Grade Strong Plastic Build
- Fast and Secure Hassle-Free Installation
- Ergonomic Design



TSEOP

- Elongated Plastic Toilet Seat
- Open Front
- High-Grade Strong Plastic Build
- Fast and Secure Hassle-Free Installation
- Ergonomic Design



TSEH237

- Elongated Plastic Toilet Seat
- Slow Close
- High-Grade Strong Plastic Build
- Fast and Secure Hassle-Free Installation
- Ergonomic Design



TSR2008A

- Round Front Plastic Toilet Seat
- Slow Close
- High-Grade Strong Plastic Build
- Fast and Secure Hassle-Free Installation
- Ergonomic Design

LAVATORY

URINAL

TOILET

TOILET SEAT



Winfield Products, Inc.

1689 E. Mission Blvd., Pomona, CA 91766

Tel: (909) 326-1551 (909) 666-5111

Fax: (909) 666-5266 (909) 326-1215

[www.winfieldproduct.com](http://www.winfieldproduct.com)